

B. Harrell
no. & Harrell
S. Federal Highway, Suite 200
Pierce, FL 34950-5178
464-1032 Ext. 1010

**NOTICE OF ESTABLISHMENT OF THE TRADITION COMMUNITY
DEVELOPMENT DISTRICT No. 9**

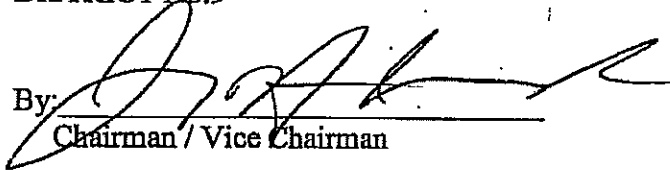
This Notice is recorded pursuant to the requirements of Section 190.0485, Florida Statutes. The Tradition Community Development District No. 9 was established by Ordinance No. 06-101, enacted September 25, 2006, by the City Council of the City of Port St. Lucie, Florida. The legal description of Tradition Community Development District No. 9 is attached as Exhibit A and is incorporated into this Notice.

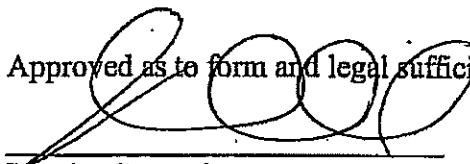
THE TRADITION COMMUNITY DEVELOPMENT DISTRICT No. 9 MAY IMPOSE AND LEVY TAXES OR ASSESSMENTS, OR BOTH TAXES AND ASSESSMENTS, ON THIS PROPERTY. THESE TAXES AND ASSESSMENTS PAY FOR THE CONSTRUCTION, OPERATION, AND MAINTENANCE COSTS OF CERTAIN PUBLIC FACILITIES AND SERVICES OF THE DISTRICT AND ARE SET ANNUALLY BY THE GOVERNING BOARD OF THE DISTRICT. THESE TAXES AND ASSESSMENTS ARE IN ADDITION TO COUNTY AND OTHER LOCAL GOVERNMENTAL TAXES AND ASSESSMENTS AND ALL OTHER TAXES AND ASSESSMENTS AS PROVIDED FOR BY LAW.

Dated this 23 day of Oct, 2006.

BOARD OF SUPERVISORS TRADITION
COMMUNITY DEVELOPMENT
DISTRICT No.9


Secretary / Assistant Secretary

By: 
Chairman / Vice Chairman

Approved as to form and legal sufficiency:

District Counsel

EDWIN M. FRY, Jr., CLERK OF THE CIRCUIT COURT
SAINT LUCIE COUNTY
FILE # 2949957 10/24/2006 at 11:40 AM
OR BOOK 2685 PAGE 722 - 729 Doc Type: NOT
RECORDING: \$69.50

STATE OF FLORIDA
COUNTY OF ST. LUCIE

The foregoing instrument was acknowledged before me this 23^d day of Oct, 2006, by James H. Anderson, Chairman of the Tradition Community Development District No. 9. He is personally known to me, or has produced _____ as identification and did did not take an oath.

[Notary Seal]



Daniel B. Harrell
MY COMMISSION # DD186968 EXPIRES
February 24, 2007
BONDED THRU TROY FAIN INSURANCE, INC.


Notary Public State of Florida

Print Name DANIEL B. HARRELL

My commission expires: Feb. 24, 2007

STATE OF FLORIDA
COUNTY OF ST. LUCIE

The foregoing instrument was acknowledged before me this 23^d day of Oct, 2006, by Henry H. Fishkind as Secretary of the Tradition Community Development District No. 9. He is personally known to me, or has produced _____ as identification and did did not take an oath.

[Notary Seal]



Daniel B. Harrell
MY COMMISSION # DD186968 EXPIRES
February 24, 2007
BONDED THRU TROY FAIN INSURANCE, INC.


Notary Public State of Florida

Print Name DANIEL B. HARRELL

My commission expires: Feb. 24, 2007

EXHIBIT A

LEGAL DESCRIPTION



Lawson, Noble & Webb, Inc.

ENGINEERS • PLANNERS • SURVEYORS

590 NW Peacock Blvd, Suite 9, Port St. Lucie, FL 34986

(772) 878-1700 • fax: (772) 878-1802 • Web: www.lnw-inc.com

West Palm Beach • Port St. Lucie • Orlando • Vero Beach

EB 3492 / LB 8874

DESCRIPTION TO ACCOMPANY SKETCH

DESCRIPTION: REVISED C.D.D. NO. 9 (TRADITION)

PARCEL OF LAND LYING IN SECTIONS 7 AND 18, TOWNSHIP 37 SOUTH, RANGE 39 EAST, ST. LUCIE COUNTY, FLORIDA AND BEING MORE PARTICULARLY DESCRIBED AS FOLLOWS:

COMMENCE AT THE MOST SOUTHERLY SOUTHEAST CORNER OF THE PLAT OF TRADITION PLAT NO. 5, RECORDED IN PLAT BOOK 42, PAGES 4, 4A THRU 4I, PUBLIC RECORDS OF SAID ST. LUCIE COUNTY, FLORIDA; THENCE SOUTH 89°57'05" WEST AS A BASIS OF MEASUREMENTS ALONG THE SOUTH LINE OF SAID TRADITION PLAT NO. 5, A DISTANCE OF 2338.72 FEET TO THE SOUTHWEST CORNER OF SAID TRADITION PLAT NO. 5; THENCE SOUTH 64°58'50" WEST DEPARTING SAID SOUTH LINE, A DISTANCE OF 8858.27 FEET TO A POINT OF INTERSECTION WITH THE EASTERLY PROLONGATION OF THE NORTH LINE OF THAT PARCEL OF LAND DESCRIBED BY WARRANTY DEED TO METROPOLITAN LIFE INSURANCE COMPANY, RECORDED IN OFFICIAL RECORDS BOOK 477, PAGE 560, PUBLIC RECORDS OF SAID ST. LUCIE COUNTY, FLORIDA AND TO THE POINT OF BEGINNING; THENCE NORTH 89°50'39" WEST ALONG SAID EASTERLY PROLONGATION OF NORTH LINE, A DISTANCE OF 3294.53 FEET TO A POINT OF INTERSECTION WITH THE EAST RIGHT-OF-WAY LINE OF STATE ROAD 609; THENCE TRAVERSING SAID EAST RIGHT-OF-WAY LINE BY THE FOLLOWING FOUR (4) CURVES;

1. NORTH 00°00'21" EAST DEPARTING SAID EASTERLY PROLONGATION OF NORTH LINE, A DISTANCE OF 1040.61 FEET;
2. NORTH 00°01'22" WEST, A DISTANCE OF 2608.73 FEET;
3. NORTH 85°42'58" EAST, A DISTANCE OF 74.96 FEET;
4. NORTH 02°05'08" WEST, A DISTANCE OF 2529.27 FEET;

THENCE NORTH 89°54'52" EAST DEPARTING SAID EAST RIGHT-OF-WAY LINE, A DISTANCE OF 689.71 FEET TO A POINT OF CURVATURE WITH A CURVE CONCAVE TO THE NORTHWEST AND HAVING A RADIUS OF 1565.00 FEET; THENCE NORTHEASTERLY ALONG THE ARC OF SAID CURVE, THRU A CENTRAL ANGLE OF 43°27'49", AN ARC DISTANCE OF 1187.19 FEET TO A POINT OF TANGENCY WITH A LINE; THENCE NORTH 44°27'03" EAST ALONG SAID LINE, A DISTANCE OF 822.17 FEET TO A POINT OF CURVATURE WITH A CURVE CONCAVE TO THE SOUTHEAST AND HAVING A RADIUS OF 1483.38 FEET; THENCE NORTHEASTERLY, NORTHEASTERLY AND SOUTHEASTERLY ALONG THE ARC OF SAID CURVE, THRU A CENTRAL ANGLE OF 65°26'22", AN ARC DISTANCE OF 194.22 FEET TO A POINT OF TANGENCY WITH A LINE; THENCE SOUTH 70°06'36" EAST ALONG SAID LINE, A DISTANCE OF 911.98 FEET TO A POINT OF CUSP WITH A CURVE CONCAVE TO THE SOUTHEAST AND HAVING A RADIUS OF 58.00 FEET; THENCE NORTHWESTERLY, WESTERLY AND SOUTHWESTERLY ALONG THE ARC OF SAID CURVE, THRU A CENTRAL ANGLE OF 49°08'12", AN ARC DISTANCE OF 49.74 FEET TO A POINT OF REVERSE CURVATURE WITH A CURVE CONCAVE TO THE NORTHWEST AND HAVING A RADIUS OF 130.00 FEET; THENCE SOUTHWESTERLY ALONG THE ARC OF SAID CURVE, THRU A CENTRAL ANGLE OF 03°03'35", AN ARC DISTANCE OF 6.94 FEET TO A POINT OF REVERSE CURVATURE WITH A CURVE CONCAVE TO THE SOUTHEAST AND HAVING A RADIUS OF 58.00 FEET; THENCE SOUTHWESTERLY ALONG THE ARC OF SAID CURVE, THRU A CENTRAL ANGLE OF 44°58'21", AN ARC DISTANCE OF 45.53 FEET TO A POINT OF TANGENCY WITH A LINE; THENCE SOUTH 18°50'26" WEST ALONG SAID LINE, A DISTANCE OF 931.06 FEET TO A POINT OF CURVATURE WITH A CURVE CONCAVE TO THE SOUTHEAST AND HAVING A RADIUS OF 1480.00 FEET; THENCE SOUTHWESTERLY ALONG THE ARC OF SAID CURVE, THRU A CENTRAL ANGLE OF 18°50'26", AN ARC DISTANCE OF 486.67 FEET TO A POINT OF TANGENCY WITH A LINE; THENCE SOUTH 00°00'00" EAST ALONG SAID LINE, A DISTANCE OF 692.24 FEET TO A POINT OF CURVATURE WITH A CURVE CONCAVE TO THE NORTHWEST AND HAVING A RADIUS OF 1580.00 FEET; THENCE SOUTHWESTERLY ALONG THE ARC OF SAID CURVE, THRU A CENTRAL ANGLE OF 30°54'06", AN ARC DISTANCE OF 852.15 FEET TO A POINT OF TANGENCY WITH A LINE; THENCE SOUTH 30°53'55" WEST ALONG SAID LINE, A DISTANCE OF 920.59 FEET TO A POINT OF CURVATURE WITH A CURVE CONCAVE TO THE SOUTHEAST AND HAVING A RADIUS OF 1925.00 FEET; THENCE SOUTHWESTERLY ALONG THE ARC OF SAID CURVE, THRU A CENTRAL ANGLE OF 30°53'55", AN ARC DISTANCE OF 1038.12 FEET TO A POINT OF TANGENCY WITH A LINE; THENCE SOUTH 00°00'00" EAST ALONG SAID LINE, A DISTANCE OF 2635.58 FEET TO THE POINT OF BEGINNING.

CONTAINING 600.308 ACRES, MORE OR LESS.

REVISE BOUNDARY 11-15-05 GRB
REVISE BOUNDARY 12-15-05 JDM

NOTE: THIS IS NOT A SKETCH OF SURVEY, but only a graphic depiction of the description shown hereon. There has been no field work, viewing of subject property or monuments set in connection with the preparation of the information shown hereon.

NOTE: Lands shown hereon were not abstracted for right-of-way and/or easements of record.

JULIAN D. MORRIS, PROFESSIONAL SURVEYOR AND MAPPER, FLORIDA REGISTRATION NO. 4731

DATE OF SIGNATURE

Julian D. Morris 1-11-06

SEE SHEETS 2-5 OF 5 FOR SKETCH

P:\500-599\B589\OVER\CDD\B589CDD9-1.dwg 12/12/2005 11:09:54 AM EST

SHEET 1 OF 5

B No. B589	DRAWN: DDB	CHECKED: GRB	DESIGN: ARCADIS	DATE: 8-25-04
------------	------------	--------------	-----------------	---------------



Lawson, Noble & Webb, Inc.

ENGINEERS • PLANNERS • SURVEYORS

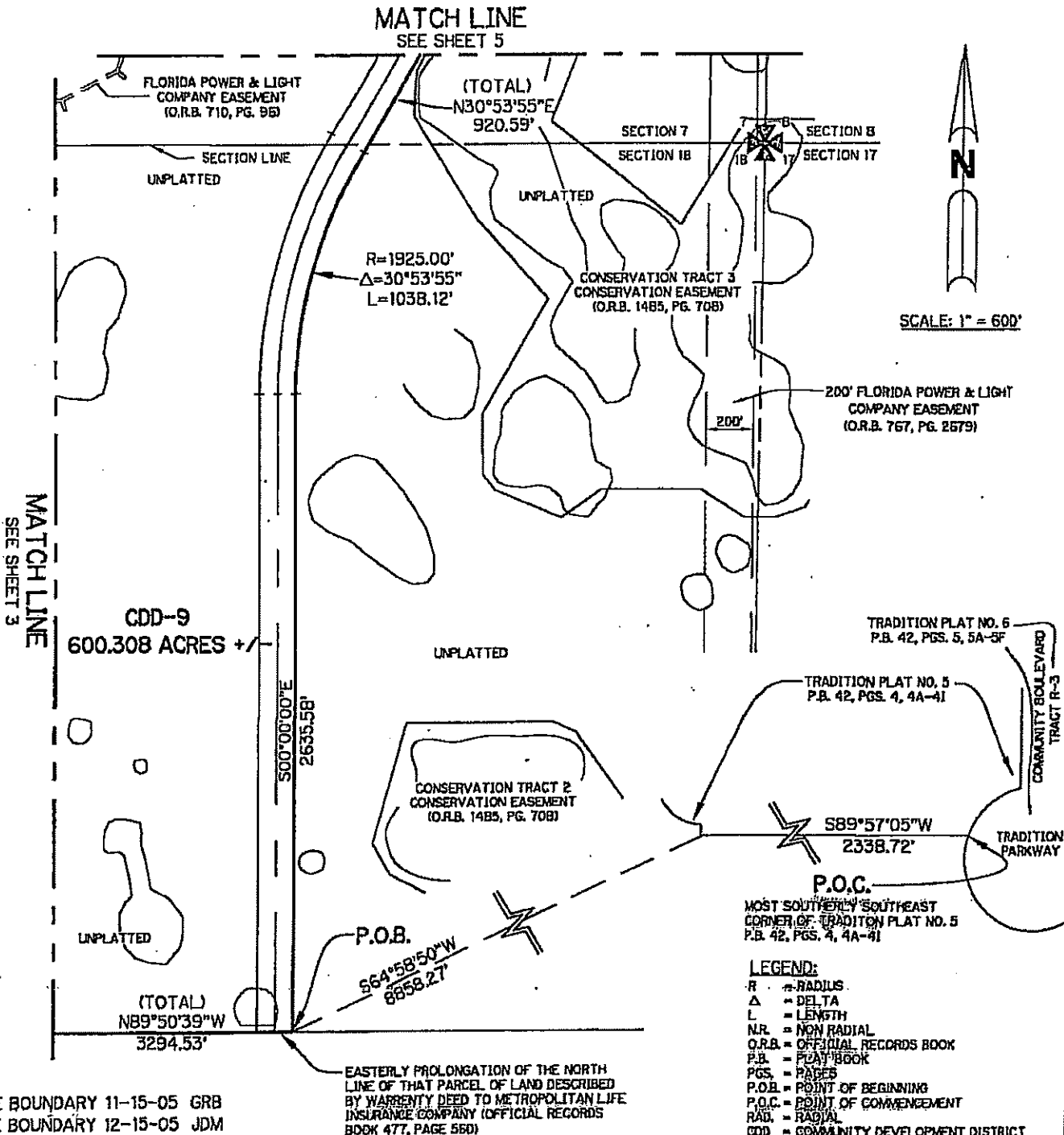
590 NW Peacock Blvd, Suite 9, Port St. Lucie, FL 34986

(772) 878-1700 • fax: (772) 878-1802 • Web: www.lnw-inc.com

West Palm Beach • Port St. Lucie • Orlando • Vero Beach

EB 3492 / LB 8874

SKETCH TO ACCOMPANY DESCRIPTION



- LEGEND:**
- R = RADIUS
 - Δ = DELTA
 - L = LENGTH
 - N.R. = NON RADIAL
 - O.R.B. = OFFICIAL RECORDS BOOK
 - P.B. = PLAT BOOK
 - PGS. = PAGES
 - P.O.B. = POINT OF BEGINNING
 - P.O.C. = POINT OF COMMENCEMENT
 - RAD. = RADIAL
 - CDD = COMMUNITY DEVELOPMENT DISTRICT

EVISE BOUNDARY 11-15-05 GRB
 EVISE BOUNDARY 12-15-05 JDM

E SHEET 1 OF 5 FOR DESCRIPTION

PA500-899\0589\OVER\CDD\8589\CDD9-1.dwg 12/12/2005 11:09:54 AM EST

SHEET 2 OF 5

B No. 8589	DRAWN: DDB	CHECKED: GRB	DESIGN: ARCADIS	DATE: 8-25-04
------------	------------	--------------	-----------------	---------------



Lawson, Noble & Webb, Inc.

ENGINEERS • PLANNERS • SURVEYORS

590 NW Peacock Blvd, Suite 9, Port St. Lucie, FL 34986

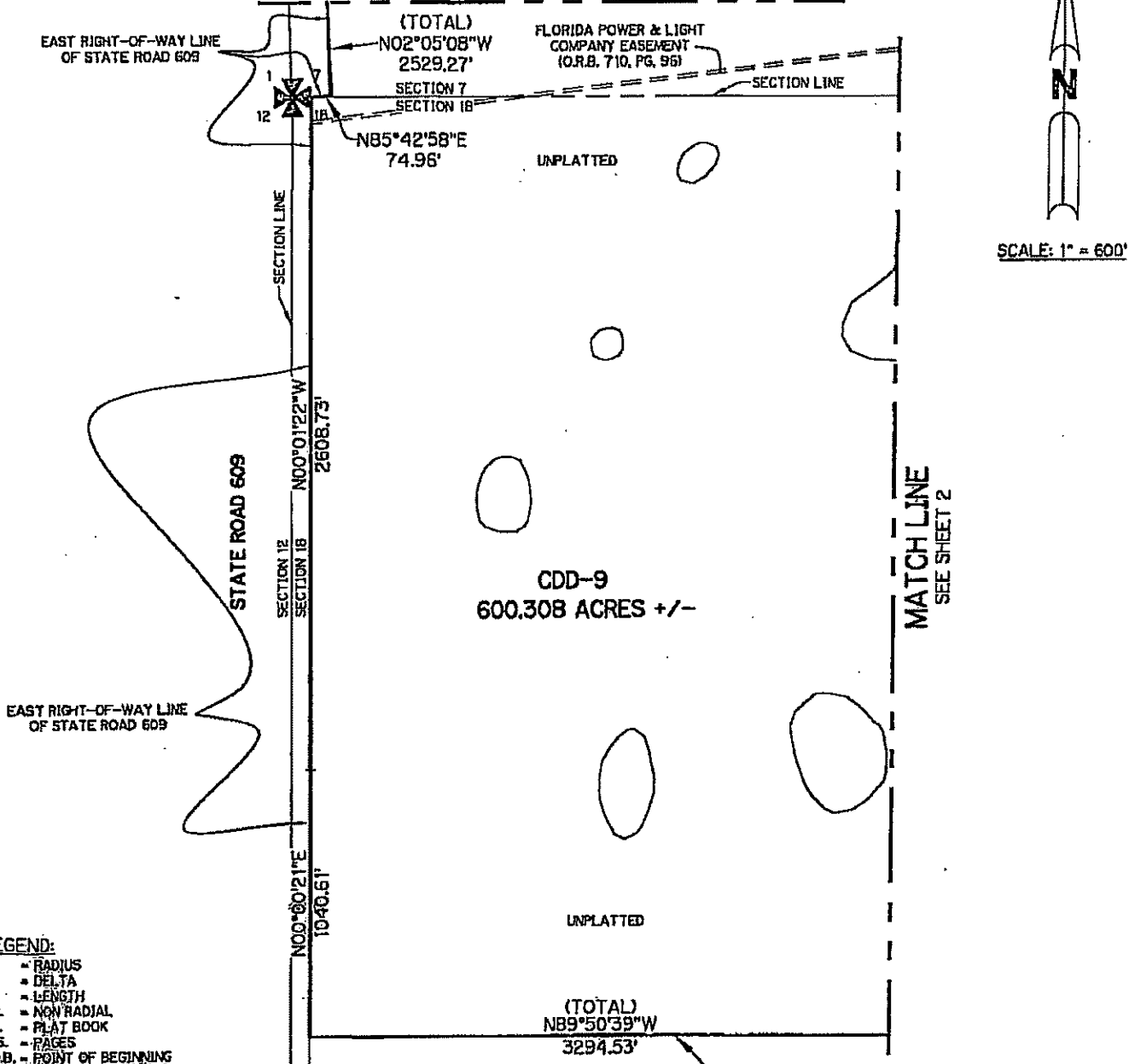
(772) 878-1700 • fax: (772) 878-1802 • Web: www.lnw-inc.com

West Palm Beach • Port St. Lucie • Orlando • Vero Beach

EB 9492 / LB 8874

SKETCH TO ACCOMPANY DESCRIPTION

MATCH LINE
SEE SHEET 4



- LEGEND:**
- R - RADIUS
 - Δ - DELTA
 - L - LENGTH
 - LR - NON-RADIAL
 - LB - PLAT BOOK
 - CS - PAGES
 - P.O.B. - POINT OF BEGINNING
 - P.O.C. - POINT OF COMMENCEMENT
 - RD - RADIAL
 - CDD - COMMUNITY DEVELOPMENT DISTRICT

EASTERLY PROLONGATION OF THE NORTH LINE OF THAT PARCEL OF LAND DESCRIBED BY WARRANTY DEED TO METROPOLITAN LIFE INSURANCE COMPANY (OFFICIAL RECORDS BOOK 477, PAGE 560)

REVISE BOUNDARY 12-15-05 JDM
 REVISE BOUNDARY 11-15-05 GRB
 SHEET 1 OF 5 FOR DESCRIPTION PA500-599\B589\DWCR\CDD\B589CDD9-2.dwg 12/15/2005 10:56:23 AM EST SHEET 3 OF 5

DB No. B589	DRAWN: DDB	CHECKED: GRB	DESIGN: ARCADIS	DATE: 8-25-04
-------------	------------	--------------	-----------------	---------------



Lawson, Noble & Webb, Inc.

ENGINEERS • PLANNERS • SURVEYORS

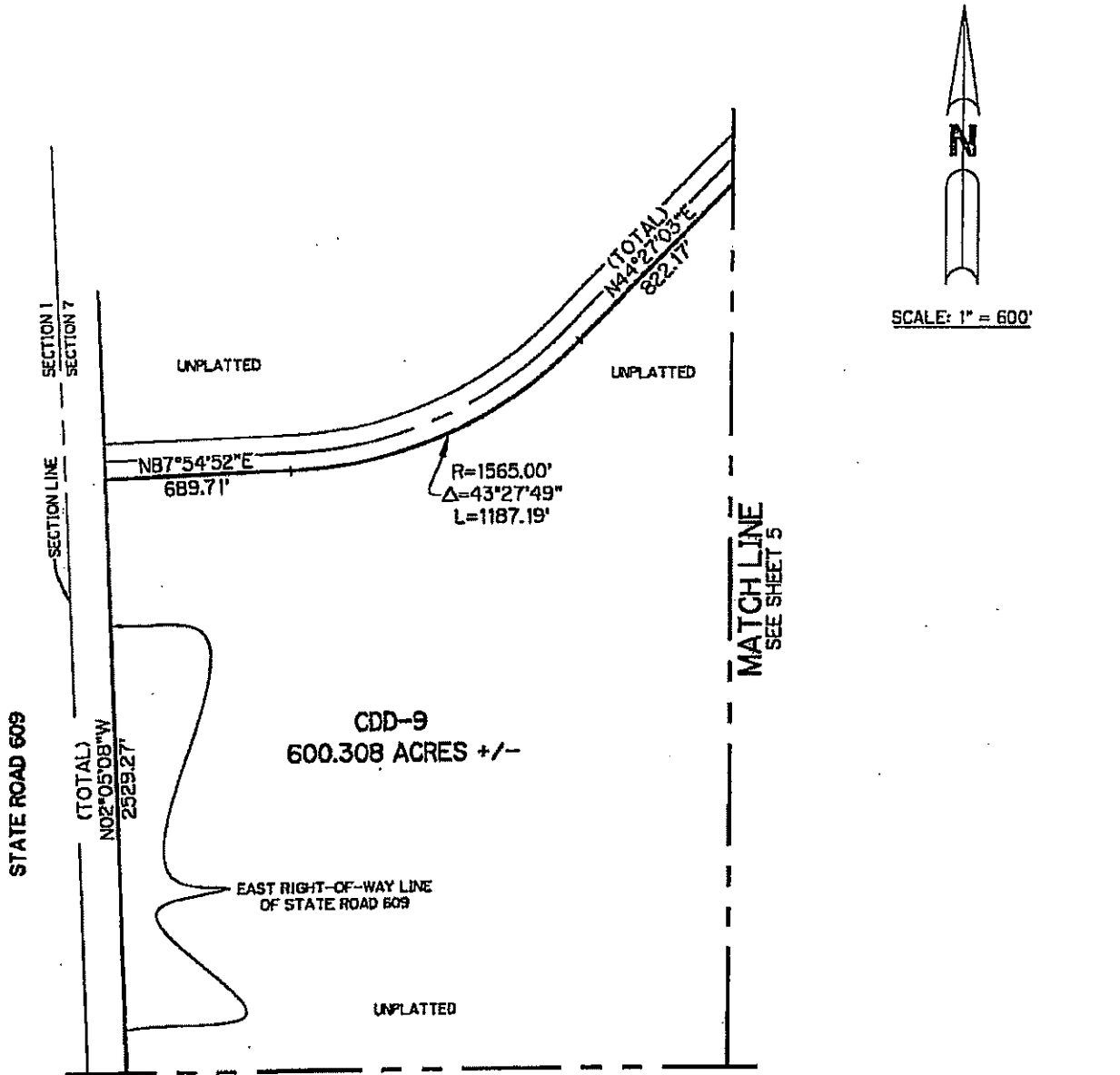
590 NW Peacock Blvd, Suite 9, Port St. Lucie, FL 34986

(772) 878-1700 • fax: (772) 878-1802 • Web: www.lnw-inc.com

West Palm Beach • Port St. Lucie • Orlando • Vero Beach

EB 9452 / LB 8674

SKETCH TO ACCOMPANY DESCRIPTION



- LEGEND:**
- R = RADIUS
 - Δ = DELTA
 - L = LENGTH
 - N.R. = NON RADIAL
 - P.B. = PLAT BOOK
 - P.G.S. = PAGES
 - P.O.B. = POINT OF BEGINNING
 - P.O.C. = POINT OF COMMENCEMENT
 - RAD. = RADIAL
 - CDD = COMMUNITY DEVELOPMENT DISTRICT

REVISE BOUNDARY 12-15-05 JDM
 REVISE BOUNDARY 11-15-05 GRB

SEE SHEET 1 OF 5 FOR DESCRIPTION P:\500-599\8589\OVER\CDD\8589CDD9-3.dwg 12/15/2005 10:57:46 AM EST SHEET 4 OF 5

IB No. B589	DRAWN: DDB	CHECKED: GRB	DESIGN: ARCADIS	DATE: 8-25-04
-------------	------------	--------------	-----------------	---------------



Lawson, Noble & Webb, Inc.

ENGINEERS • PLANNERS • SURVEYORS

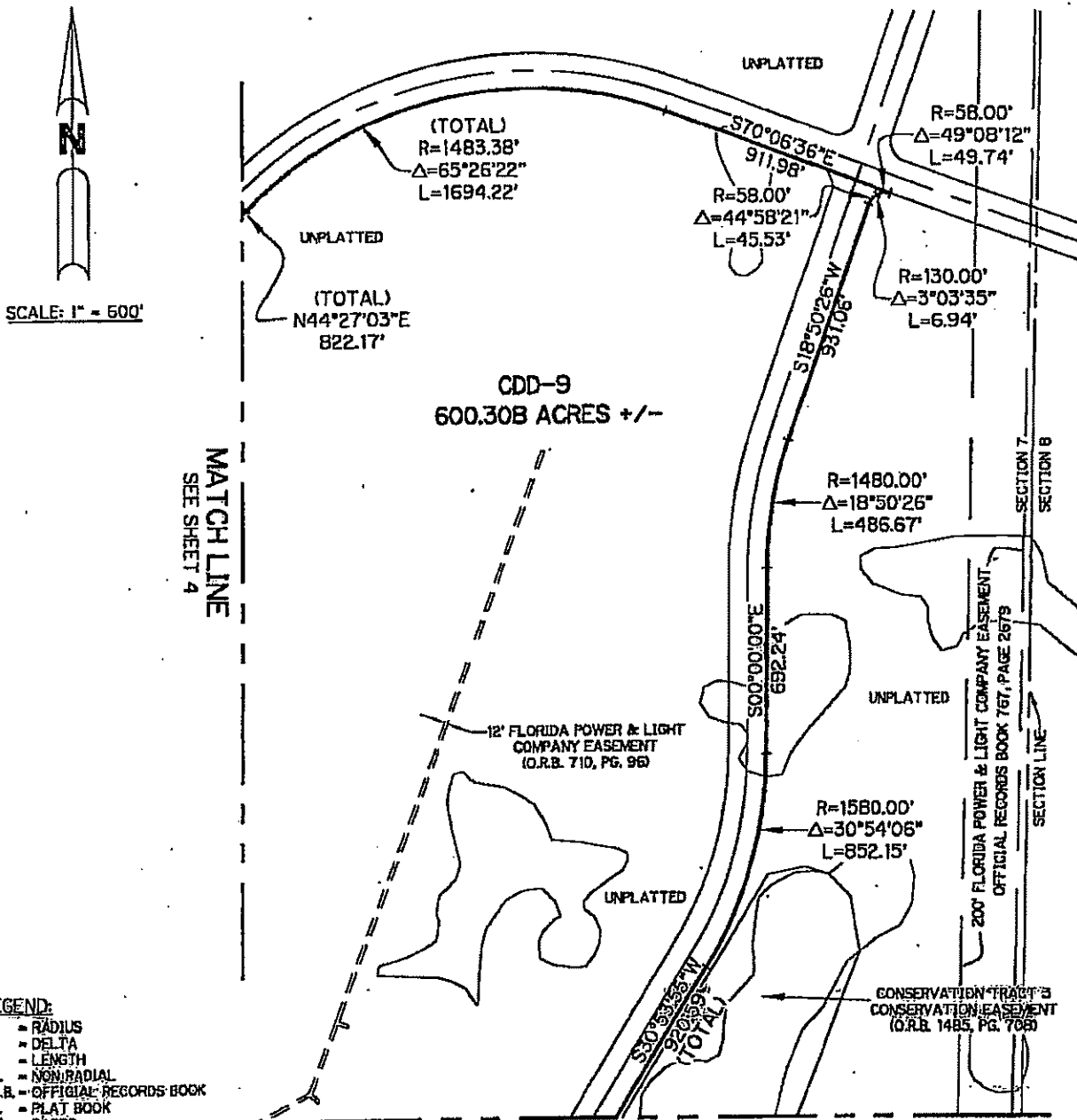
590 NW Peacock Blvd, Suite 9, Port St. Lucie, FL 34986

(772) 878-0100 FAX (772) 878-1802 • Web: www.lnw-inc.com

West Palm Beach • Port St. Lucie • Orlando • Vero Beach

EB 5452 / LB 6874

SKETCH TO ACCOMPANY DESCRIPTION



- LEGEND:**
- R - RADIUS
 - Δ - DELTA
 - L - LENGTH
 - R - NON-RADIAL
 - R.B. - OFFICIAL RECORDS BOOK
 - B. - PLAT BOOK
 - SB. - PAGES
 - O.B. - POINT OF BEGINNING
 - O.C. - POINT OF COMMENCEMENT
 - RD. - RADIAL
 - CD - COMMUNITY DEVELOPMENT DISTRICT

REVISE BOUNDARY 12-15-05 JDM
 REVISE BOUNDARY 11-15-05 GRB

SEE SHEET 1 OF 5 FOR DESCRIPTION P:\500-599\589\OVER\CD\589\CD9-4.dwg 12/15/2005 10:52:42 AM EST SHEET 5 OF 5

DB No. B589	DRAWN: DDB	CHECKED: GRB	DESIGN: ARCADIS	DATE: 8-25-04
-------------	------------	--------------	-----------------	---------------